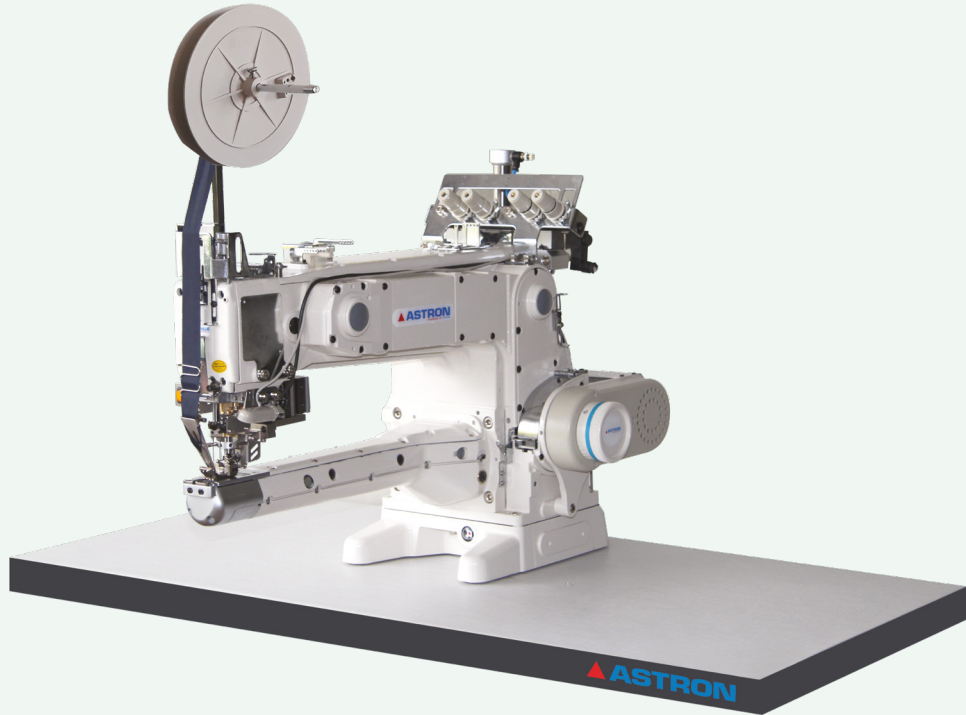


AST-2800-264-ATK/SM

Uzun Dik Burunlu, 2 İğne Zincir Dikişli, Elektronik Biye Kesicili Biye Takma Makinası
 Feed up the Arm 2 Needle Chain Stitch Tape Attaching Machine with Tape Cutter

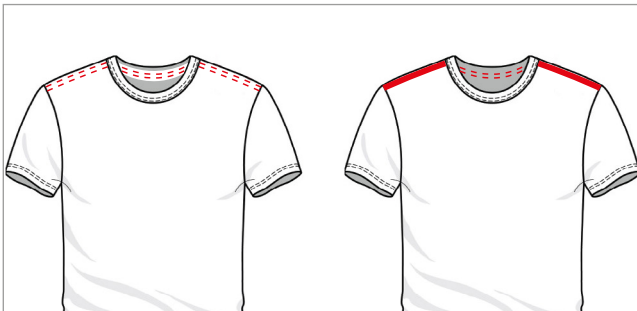


Özellikler

- Kol ve yan çatma işleri için dar alanlarda mükemmel dikiş kalitesi
- Mükemmel iki iğne zincir dikiş kalitesi
- Direct drive motor sayesinde enerji tasarrufu ve minimum titreşim
- Otomatik ayak kaldırma
- TFU biye besleme sistemi (opsiyonel)
- 5.000 dev./dak.

Specifications

- Perfect stitch quality at narrow working areas, for arms and sides attaching
- Perfect three needle coverseam quality with upper thread
- Energy saving and minimum vibration due to direct drive motor
- Automatic presser foot lifting
- TFU tape feeding system (optional)
- 5.000 rpm



AST-380/TD6A6/YB/FBK/TFU

Düz Yataklı İki İğne Omuzdan Omuza Biye Takma ve Biye Besleme Sistemli
İğne Pozisyon Ayarlı Zincir Dikiş Makinası
 2 Needle Flat Bed Chainstitch Machine for Shoulder to Shoulder Tape
 Attaching with Sensor Controlled Cutter

